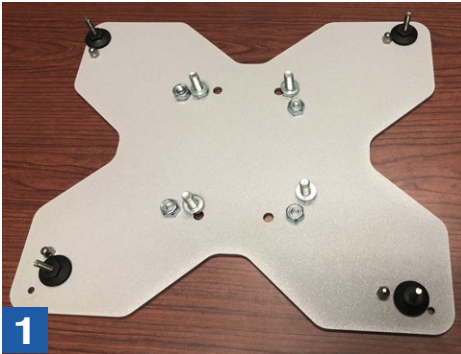
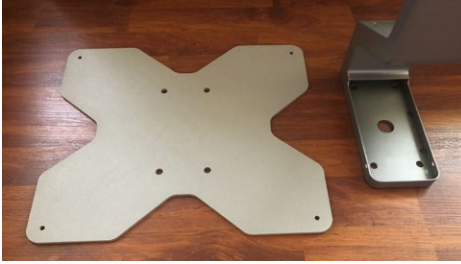


THERMAL ENTRY SHIELD FLOOR STAND MOUNTING



1 Layout the base plate next to the floor stand.



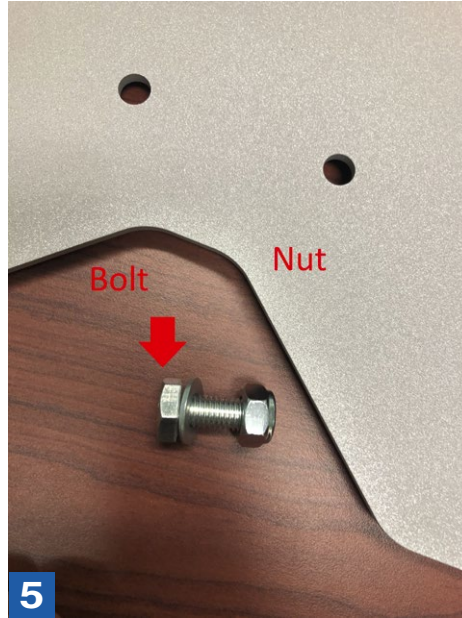
2 Install the crush washers and washer after nut. As shown in the image.



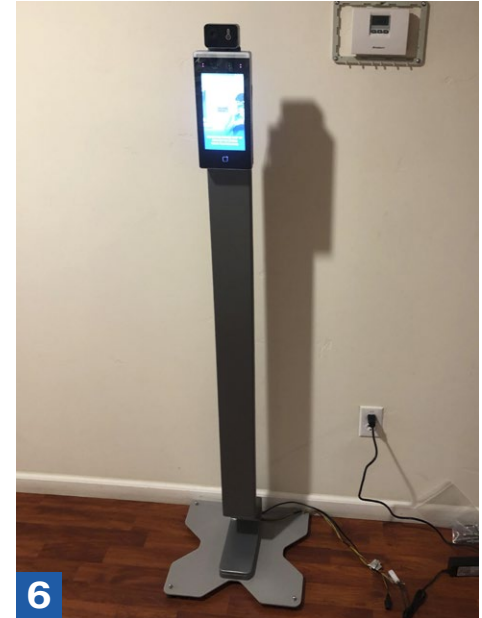
3 Install the stabilizing pegs on the four corners of the base plate making sure it is leveled.



Secure the “acorn” nut turning clockwise while holding the stabilizing peg and rotating it counter clockwise.



Repeat the process with the interior nuts and bolts. Align the floor stand over the interior bolts. Secure the base plate to the floor stand.



This is how the completed installation should look like.



American Technologies Network International
www.atneu.com